

CHI VPN Instructions

Below are steps for setting up the VPN client. The first set of steps goes over the process for setting up and configuring the client on a home computer. Once these steps are complete the VPN client will not need any more configuration changes. Each time you start your computer, you will be connected to the CHI network.

The second set of steps goes over the process for connecting to the CHI VPN from a public computer. When connecting to the VPN from a public computer, it is very important to follow the appropriate steps.

If anyone has questions or needs assistance, please contact Isaiah at GadellNet...314-431-0358.

Initial Setup Steps for Home Computers:

1. Go to the following URL and enter you network username and password...

<https://host1.childrenshope.net:444/sslvpnVirtualOffice.html>

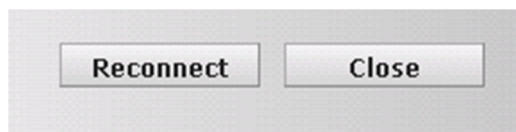
Note: It is recommended to use Internet Explorer when accessing this site.

If you are given a security certificate warning, click "Yes" to proceed.

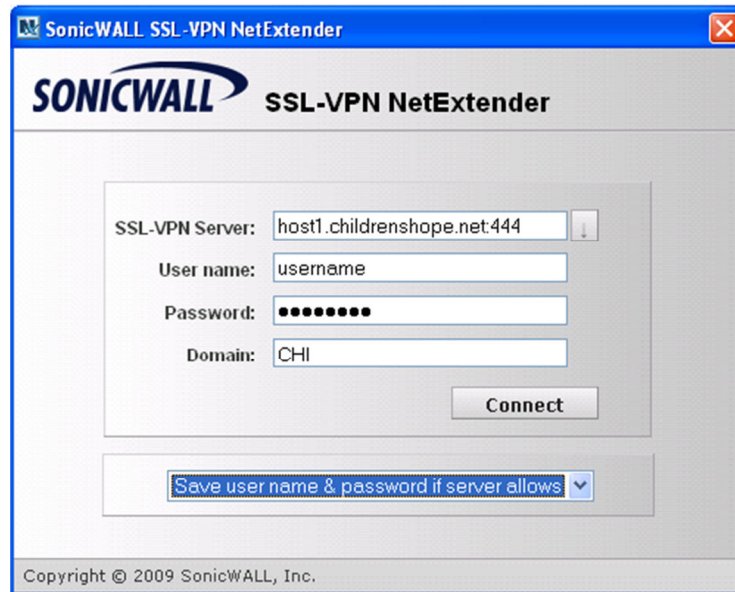
Once you are authenticated, this site will automatically begin downloading and installing the VPN client.

If you are prompted with the yellow bar in your browser to install ActiveX, right-click on the bar and install. You will then need to click on the NetExtender icon again to initiate the install.


2. The SonicWall NetExtender will now be installed. It will initially try to connect, but will fail. You simply need to click the "Reconnect" button.

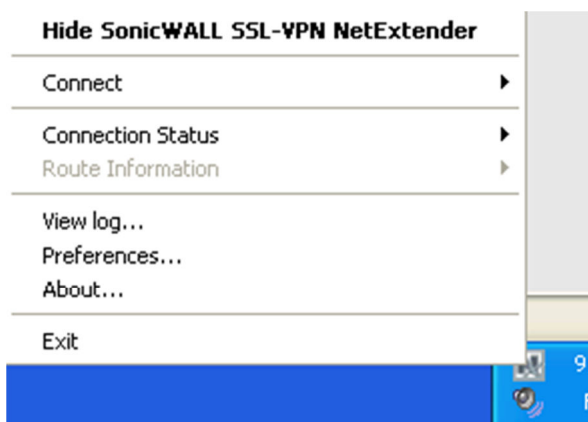


3. At the connection window, you will need to enter your username and password, **and choose the option to “Save uername & password if server allows”**. This will configure the VPN to remember your password for future connections.

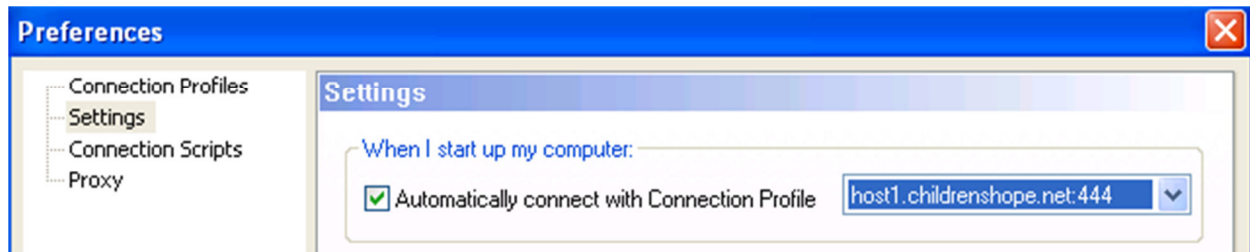


Note: You must connect one time before going to step 4.

4. To configure the VPN client to connect each time you start your computer, you will need to right-click the NetExtender icon () in the system tray and choose “Preferences”



5. In the Preferences windows, choose “Settings” and check the first box, “Automatically connect with Connection Profile” and choose the connection profile.



6. Click "OK".

You have now installed and configured the VPN to run and connect each time you turn your computer on.

Steps for connecting to the VPN on a Public Computer:

These steps are very similar to the steps for connecting on your home machine only you will not be configuring the VPN client to run when the computer starts. You will also be configuring the VPN client to forget your username and password and you will be uninstalling the VPN client when you are finished using it.

1. Go to the following URL and enter you network username and password...

<https://host1.childrenshope.net:444/sslvpnVirtualOffice.html>

Note: It is recommended to use Internet Explorer when accessing this site.

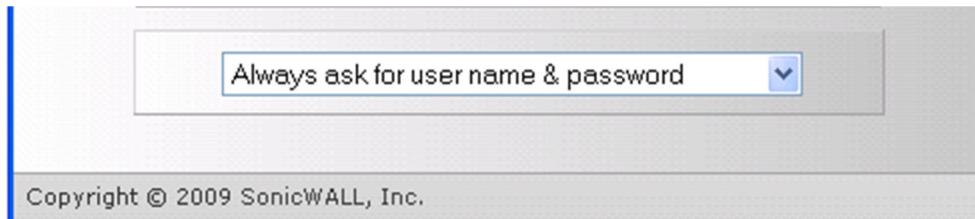
If you are given a security certificate warning, click "Yes" to proceed.

Once you are authenticated, this site will automatically begin downloading and installing the VPN client.

If you are prompted with the yellow bar in your browser to install ActiveX, right-click on the bar and install. You will then need to click on the NetExtender icon again to initiate the install.

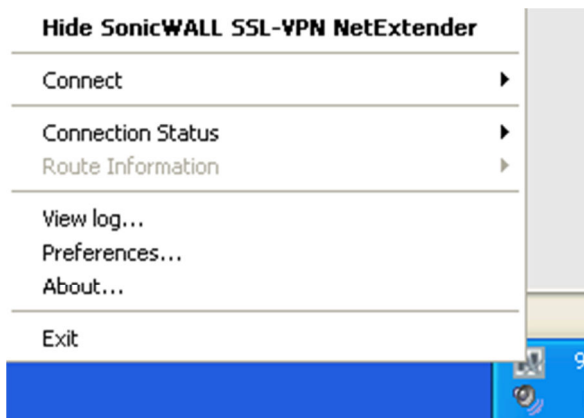
2. The SonicWall NetExtender will now be installed. It will initially try to connect, but will fail. You simply need to click the "Reconnect" button.
3. At the connection window, you will need to enter your username and password, **and choose the option to "Always ask for user name & password"**. This will configure the VPN to remember your password for future connections.

This is the main difference from the above Step 3...



4. When you are done, using the VPN on a public computer it is best to uninstall the VPN client. To uninstall the client:

- a. Exit the NetExtender client by right-clicking the icon () in the system tray...



- b. Go to the Start menu > All Programs > SonicWall SSL-VPN NetExtender > click the “Uninstall” option.